

MI4316371

## Large Edwardian Mahogany Tailor's Mirror

**£1,150.00**

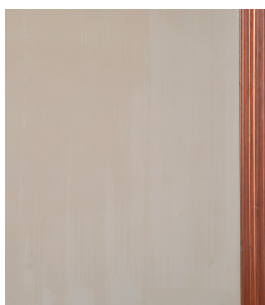
W: 107 cm (42 1/8")  
H: 137 cm (53 15/16")  
D: 4 cm (1 9/16")

Wonderful English Edwardian period mahogany tailor's mirror.

This mirror has an elegant rectangular frame with a French polished finish and it retains its original parquet backboards. Also retaining its original deeply bevelled mirror plate with beautiful light foxing.

A very timeless and attractive mirror, suitable for any interior.

Materials & Techniques: Mahogany, Mirror  
Condition: Excellent  
Period: 20th Cent



30 Long Street, Tetbury  
Gloucestershire GL8 8AQ  
T: 01666 505 111

Hangar One & Hangar Two  
Babdown Airfield, Gloucestershire GL8 8YL  
T: 01666 503970/502199