

DA8516510

Spelter Figure by Émile Louis Picault

£1,295.00

W: 31 cm (12 3/16")
H: 68 cm (26 3/4")
D: 30 cm (11 13/16")

Large spelter figure by Émile Louis Picault, circa 1890s.

This figure is titled *Pro Aris Et Focis*. The warrior is depicted drawing his sword and a tablet reading 'PRO ARIS ET FOCIS' - for home and hearth - rests at his feet.

Presented on a marble base with the inscription 'HONOR PATRIA' as well as the maker's signature. Wonderful colour and patina throughout.

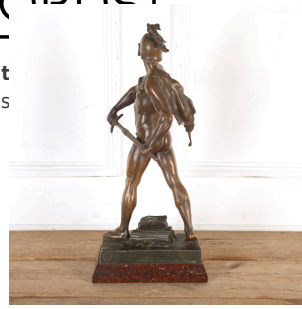
Émile Louis Picault (1833-1915) was a French sculptor, best known for works depicting the heroes of classical mythology.

He enjoyed considerable commercial success during his lifetime and his works were cast by the prolific French firms Susse Freres and Houdebine.

A wonderful interior feature.

Materials & Techniques: ['258']
Condition: Good
Period: 19th Cent





LOPES

nt
ds